









The screenshot shows a web application interface for 'List & Label 15'. On the left, a sidebar menu lists categories: Article, Jerseys, Lights, Mountain Bikes, Shorts, and Socks. The 'Mountain Bikes' category is selected, and a 'Drilldown' menu is open, showing options: 'Open here', 'Open in new tab', and 'Open in window'. The main area displays a table of mountain bikes with columns: Article No., Name, Price, and Product foto. The table lists several 'Mountain-100 Silver' bikes with different sizes (38, 42, 44, 48) and one 'Mountain-100 Black' bike. To the right of the table, there are several award logos, including 'PC Magazin sehr gut', 'dotnetpro 1st Place Readers' Choice 2008', and 'dotnet magazin 2008'.

Article No.	Name	Price	Product foto
BK-M82S-38	Mountain-100 Silver, 38	3.399,99 €	
BK-M82S-42	Mountain-100 Silver, 42	3.399,99 €	
BK-M82S-44	Mountain-100 Silver, 44	3.399,99 €	
BK-M82S-48	Mountain-100 Silver, 48	3.399,99 €	
		3.374,99 €	
		3.374,99 €	
BK-M82B-44	Mountain-100 Black, 44	3.374,99 €	
BK-M82B-48	Mountain-100 Black, 48	3.374,99 €	

LL15: Drill It, Baby!

Before you imagine something completely different... ;-) With the new drilldown reporting, it's a joy for you to drill your way through hierarchical databases. And conversely, we predict it will permeate your work routine as well. Finally, you can display your data hierarchy three-dimensional!

Drilldown = Reporting in the Third Dimension.

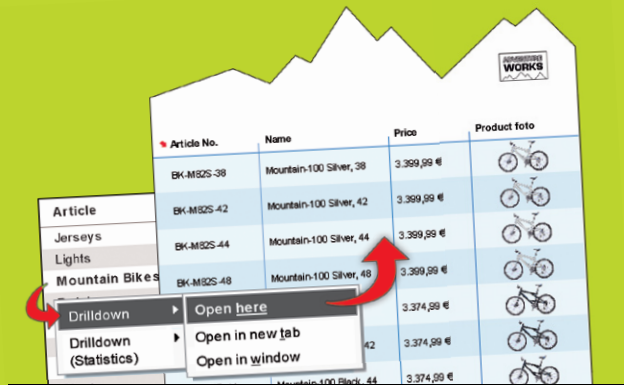
Beautiful three-dimensional, sorry, hierarchical databases, with umpteen different tables, all connected to one another any which way, making them highly meaningful. But how do you bring all that into a report in such a way that the users still manage to deal with it? Drill it! As a user, you click along the links in the preview, deeper and deeper until you've reached the data level you need. And that is exactly what you pass to the printer or into a PDF, neatly and cleanly. Even with very large and complex databases, you can be certain that, as a developer, everyone can quickly process the information they're looking for. And one more advantage: the report design can also be made substantially cleaner, restoring a sense of order. Drilldown saves time and nerves for everyone involved.

But our project manager's favorite feature is the **vastly extended data supply for .NET**. Previously, data had to be loaded in a DataSet for data binding, now LL15 accesses the database directly. "Everything is new, and above all, wonderful" Jochen Bartlau enthuses, almost misty-eyed. A romantic? Previously, for similar results, you would have needed 25 pages of code, and now it runs in 6 lines. And with these savings in time, plus the savings when printing, you may certainly develop romantic feelings.

LL15 Highlights

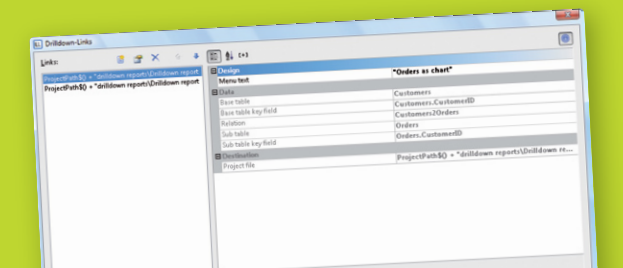
- ➔ **Drilldown reporting** :: user-friendly processing of hierarchical data
- .NET Data Binding** :: faster and easier :: direct access to data sources
- PDF Export** :: PDF/A :: Revision-secure archiving :: CID-keyed fonts (Unicode)
- 64-Bit Version** :: fully utilize RAM with the Professional and Enterprise Edition
- Windows 7 certified** :: expected at release date
- Visual Studio 2010 Beta + RAD Studio 2010**
- Document output** :: Original/copy control
- New Barcodes** :: very latest GS1
- Calculation** :: to any precision
- ➔ **New features are automatically included in current subscriptions!**
- ➔ **All other customers with a List & Label license can expect early-bird upgrade prices through Oct 28, 2009** :: Pre-order an upgrade and save **40%** on the original price of Professional or Enterprise (subscription) or a full **50%** on the original price of the Standard Edition.
- ➔ **Release date** :: **exp. Nov 2009**

Top Features of Version 15

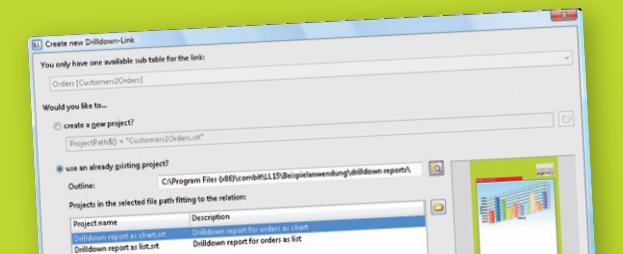


Drilldown Reporting

Specialized reports fast is what you'll get with reporting in the third dimension. The user clicks in the preview step by step, down to the final result. The result can be stored or printed, e.g., output as a PDF. The next level is opened in a new window or extra tab as desired, for better orientation. The drilldown definition as shown here exists for fields or entire table rows. **More at www.combit.net/en/drilldown**



Work with drilldown link



Create new drilldown link

Drilldown reporting is the navigation of hierarchical data through different levels of detail. Drilling for oil should lead you to the precious black gold by the most direct way – and it's the same with reporting: The motto is, make large data sources usable and ensure the efficiency. So drilldown reporting always makes sense when you want to report relational structures and view details, in a user-friendly way.



Providers

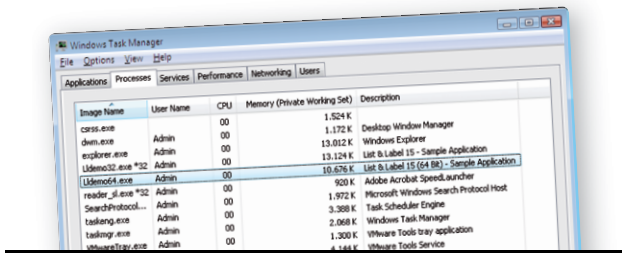
:: SQL :: OleDb
 :: Oracle :: XML
 :: MySql :: LINQ
 :: Postgres :: ADO.NET

New Data Supply for .NET

Connections to databases run much easier and faster. LL15 now accesses databases directly. The workload of the database server is minimized, and queries are only made for what is necessary.

To understand the overall picture: Previously, 25 pages of lower-case code were required for the same result for which you now only need 6 lines. And the memory was not able to handle extremely large databases anyway. Now the Designer is opened in a flash, even with very extensive databases, and even very complex data structures can be reported quickly and in a scalable manner.

In addition to the SQL Server data provider, we've created many others (see above) that allow connection to other key database systems such as Oracle and OleDb, for example. Other providers offer direct access to XML files or LINQ objects or connection to IDbCommand objects, along with the relations between them. All databases that can communicate over those types of command objects – in other words, almost all ADO.NET data sources – can be connected to LL15 in that way. "The importance of the data provider feature to the .NET developer can scarcely be overestimated. We have here a completely new dimension in reporting", according to project manager Jochen Bartlau. And on top of that, we've disclosed and documented the interfaces that need to serve a data provider object of that type, in other words, you can connect previously unsupported data sources to LL15 yourself very easily. Instead of a complete print loop, just implement the interfaces, and you're done!



64-bit Version for Subscriptions

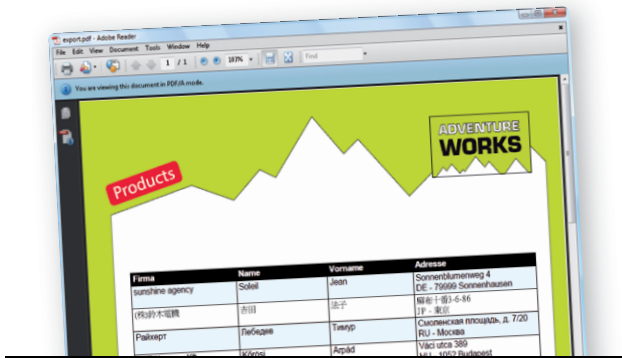
Join in the 64-bit applications world and benefit from the advantages! There are only a couple of limitations: HTML+OLE object, 2D barcodes, Project Assistant, Excel export, digital signature and STAMPIT.



:: 64-Bit
 :: Visual Studio 2010
 :: RAD Studio 2010
 :: Windows 7

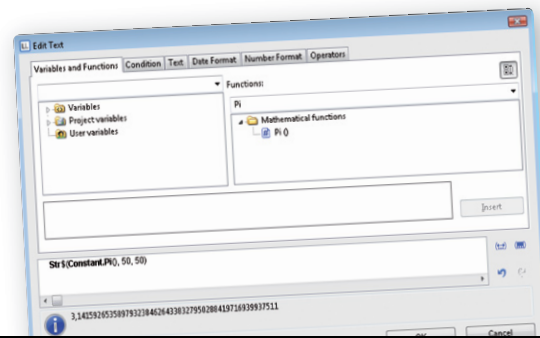
Windows 7 and Visual Studio 2010

At almost the same time as the release of Windows 7, LL15 is expected to have the "Compatible with Windows 7" logo designation. Clear for launch after intensive tests: LL15 with Visual Studio 2010 Beta and RAD Studio 2010.



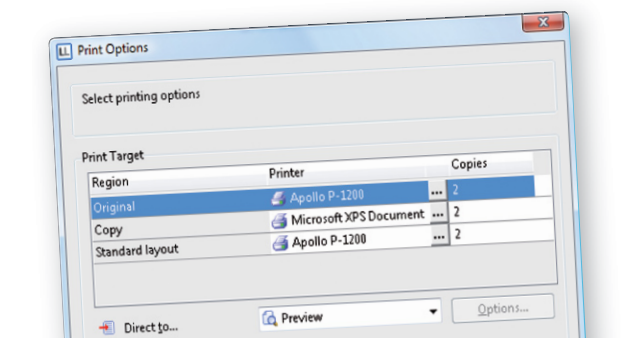
Greatly Enhanced PDF Export

Revision-secure archiving through PDF/A-1a standard, support for CID-keyed fonts, hashing of identical images (lower memory consumption) and a basic form print with input fields and checkboxes.



Calculation Precision Increased

Rounding errors become more unlikely, since by default, calculations are now made to 50 decimal places, which can be increased to any further precision. New features also include an entire armada of additional mathematical functions.



Document Output Control

The original on a high quality printer and the copy on a cheaper printer, and with an actual copy overprint. That now all happens in one print run. We hope we've made everyone who wanted that happy.



New GS1 Barcodes

In demand for products as of 2010. Increased data density and better scanability saves time at the checkout counter. LL15 supports GS1 DataBar - Basic, Expanded, Limited, Stacked, Stacked Omni, Truncated and Composite.

List & Label 15 News

```
private class MyILCallback implements combit.callbacks.Callback
{
    public void notify(CallbackInfo value)
    {
        switch(value.callbackID_)
        {
            case CbIL15_LL_CHAR_VARIABLETEXT:
            {
                VarHelpTextCallback varHelpText = (VarHelpTextCallback)value;
                if(varHelpText.getDescription() == "<My Var/Field to change its description>")
                    varHelpText.setDescription("New Var/Field description");
            }
            break;

            default:
            {
                System.out.println("unknown/unhandled IL-callback (" + value.callbackID_ + ")");
            }
            break;
        }
    }
}
```

Enhanced Java Component

You can now work even more flexibly with Java, because you can react to specific List & Label callbacks. There is also a basic help JavaDOC for support in this area. The Java wrapper now requires Java 2 SDK (JDK 5(1.5)).

Important To Know

➔ **Exp. release date** Nov 2009

➔ **As an active Professional or Enterprise Edition subscriber**, you already have version 15 included, so everything is already taken care of and paid. You'll automatically receive information from us about download or delivery on CD. Please register if you haven't already.

➔ **All other customers with a List & Label license – regardless of edition and version – can expect the early-bird price through Oct 28, 2009...**

...**Subscription as special upgrade.** Change now to Professional or Enterprise Edition! You'll save **40%** of the original price. Original prices come into effect again after Oct 28, 2009, so grab the opportunity! You can find the countless advantages of a subscription at www.combit.net/en/licensing.

...**Standard Edition 15 as an upgrade.** You'll save **20%** of the regular upgrade price, and so a full **50%** of the original price. The regular upgrade price applies after Oct 28, 2009.



Pre-Order Now!

Enterprise Edition Includes Language

Since we consider the Enterprise Edition as a truly **carefree, all-around package**, starting from version 15, it comes included with all available Designer language kits, in addition to its many other advantages. This doesn't change the pricing, in other words, you save! The specific languages available depend upon our partners and the relevant demand. They will certainly include German, French, Italian and Spanish in addition to English.

Subscribers Already Have It...

... It's new for everyone else. Here is a section on what has already been done during version 14:

- :: **Unicode and Java Support** for the Standard Edition
- :: The soft hyphen (code 0xad) is supported in text wrapping, as a replacement for LL_CHAR_PHANTOMSPACE if a hyphen should be printed in case of wrapping
- :: The .NET component tries to convert all Byte[] fields using GDI+ to images
- :: **New support** for EAN Datamatrix barcode, uses "~1" to encode FNC1
- :: **New designer property**, to keep group footer and group header rows together
- :: **New flag** for LProjectOpen(), so no printer DC is created. The project is loaded faster
- :: **Strg+ and Strg-** to zoom in and out in the designer
- :: **New property** "export as image" for graphic objects
- :: **Several enhancements** for DOM properties ...and more

Questions?

We're here for you! Tel +49 (0) 7531 90 60 10

You'll find more information before the release date, on other innovations, screen shots in original size and a product film on innovations, at our website: www.combit.net/en. Our InfoService will keep you posted, we recommend that you subscribe to it if you haven't already.

© combit GmbH 2009, subject to changes and possible errors! This content is only a description and does not represent a guarantee for the quality of the product. Please note that with the third-party product versions that are mentioned, different releases may occur that include other functions. We therefore recommend trying out our free of charge test version in order to avoid any possible problems in advance. All named products and product descriptions as well as logos are brands, are registered trademarks or the property of their respective owners.

combit GmbH
Untere Laube 30
78462 Konstanz
Germany

Sales & Service Team
T +49 (0) 7531 90 60 10
F +49 (0) 7531 90 60 18
sales@combit.net

www.combit.net/en