

Version 14 automatically included for subscribers

# LL14: Breaking the Boundaries

We never considered bringing different List & Label worlds together: the real data preview is now also a part of the Designer. Projects can contain portrait as well as landscape formats. Challenges have been achieved; you feel brilliant. What else are we doing?

## Real data preview now also resides within the Designer.

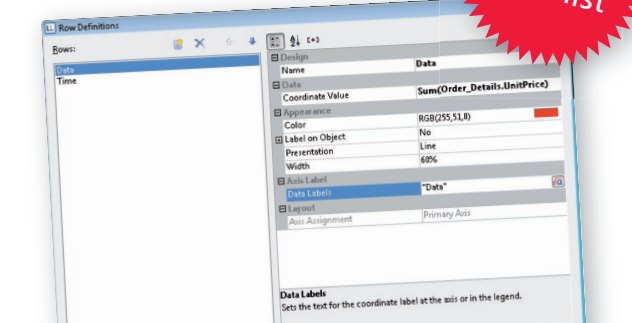
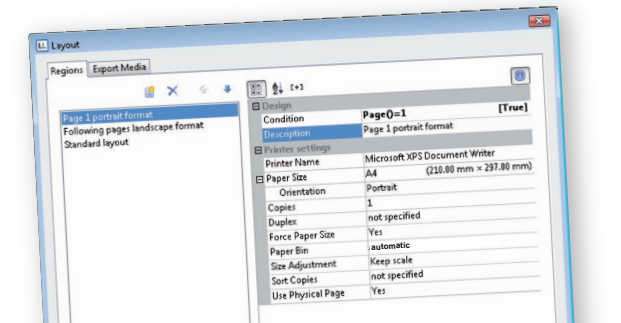
Simply said, the innovation has an endless influence on all and for everyone: no more out of the Designer, and back into the Designer. The time saving is enormous as is the benefit to your frayed nerves. "It is a completely new design feeling" says Jochen Bartlau, Project Manager of List & Label. "There is no longer a reason to leave the Designer environment ever again" he says with a wink in his eye. And he is right, as printing and export and everything else that has been started from the preview can now be started from the Designer!

Different layout regions allow you to slip a landscape format in your otherwise portrait format report and deal with your different paper trays. In chart objects you juggle skillfully with rows and provide e.g. target comparisons dependent on time as a line chart. You expertly place an index in the preview and create DOM code from your project file, automatically of course. The simplified mode for properties catches the user's eye in the Designer and the new function filter delivers what you are looking for in a blink. More in the following.

## LL14 Highlights

- ➔ **Real data preview in the Designer** :: complete preview functionality directly in the Designer
  - Layout regions** :: different paper formats (A4, legal, letter, transverse) :: (multi-) tray control
  - Charts** :: real rows
  - Preview** :: create an index :: reduction in file size for JPEG pictures
  - DOM** :: automatically create code from project :: DOM viewer revised including a search function :: support of layout regions
  - Designer** :: simplified property view mode :: filter for functions, variables and fields :: ruler guides can move attached objects :: new output formats :: comments within formulas :: Designer extension via own actions
- 
- ➔ **Release date** :: Oct/Nov 2008
  - ➔ **For subscriptions, all new features are automatically included**
  - ➔ **Early bird** :: pre-order by Oct 22, 2008 and save up to 20% on the regular upgrade or new license price :: for more details see reverse

# List & Label 14 News

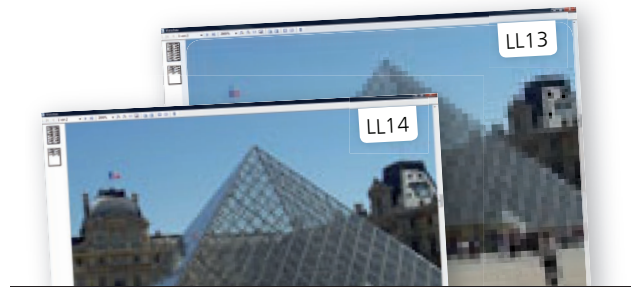
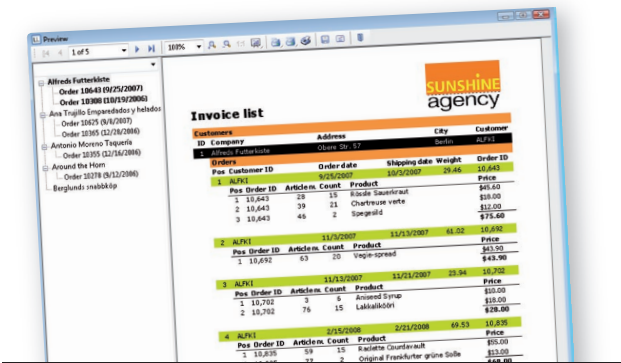


## Different layout regions

**Mixing possible.** First page on printer1, then onto printer2, subsequently onto printer3, then the last one onto payment form printer. Swap formats within the Designer? Conditional change to landscape format? Sure!

## Rows in the chart object

**With a single record** from the database you define real rows e.g. actual value, specified value, tolerance, and display in parallel within a line diagram with reference to time. Simple and user friendly!

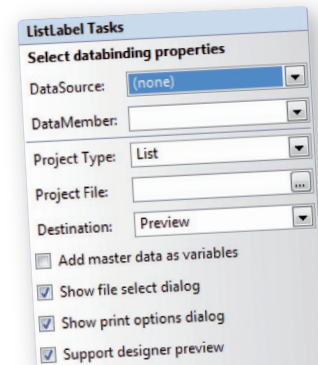
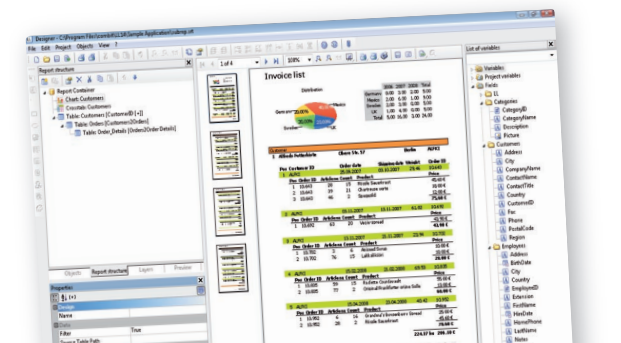


## Preview with index

**Index as done with PDF,** you can comfortably navigate through the report on the left hand side of the List & Label preview. Especially for large files this is the easiest way to quickly locate what you are looking for.

## Preview and JPEGs

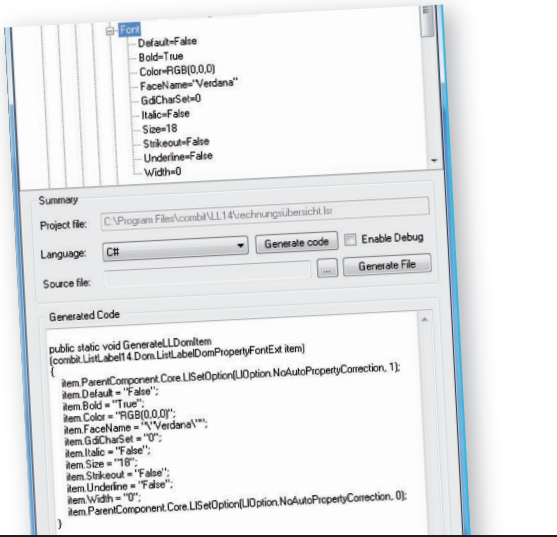
**The preview file is up to 80% smaller** when there are a lot of JPEGs involved. Really useful whenever preview data is traveling per download. Additionally, optional image smoothing is pleasing to the eye.



## Real data preview within the Designer

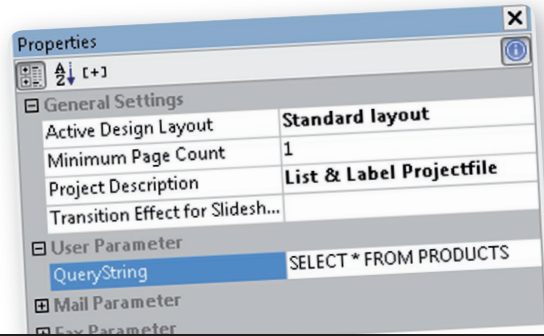
**Speed-Designing.** The impact of your changes is visible immediately. The complete preview is located within the Designer hence inclusive print, export, e-mail and slide-show. Integration with data binding into .NET or VCL is

inclusive. Other development environments work as well if they can handle threads and callbacks. Such as C++, for instance, for which we provide a sample.



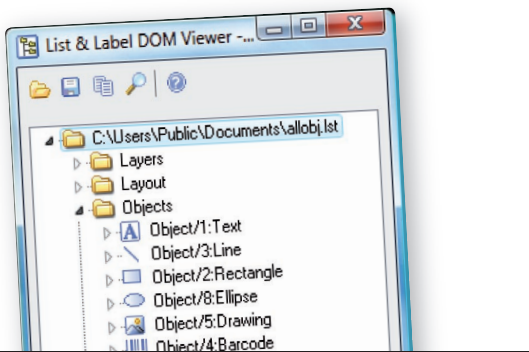
### DOM code from project files\*

**The other way round, too.** Properties, individual objects up to complete projects can be generated as DOM code for .NET with a simple call. Instead of working with a pencil and paper, design where it is the easiest: in the Designer.



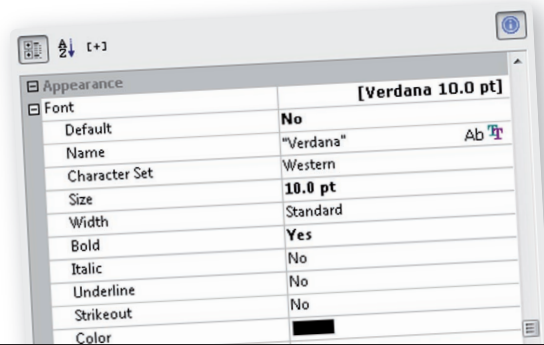
### Project file as general storage

**Now even cleverer.** Project parameter interface extended by one method, and SQL queries or complete data sets in the project file can be filed and found again. Gorgeous, those parameterizable reports!



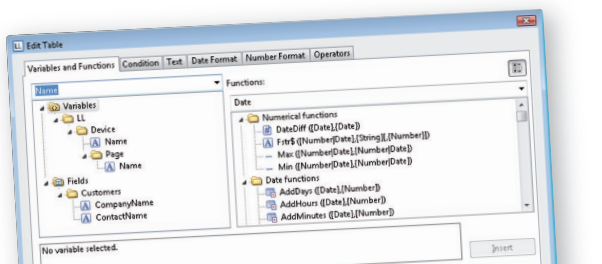
### DOM viewer reworked\*

**Embellished and ready to search.** With a Vista look & feel, with a widely extended range of icons, the DOM viewer provides a better overview, allows drag & drop opening and the location of individual objects or properties.



### Simplicity for properties

**When less is more,** users will find their way better. Optionally, plain language brings it to the point. Your changes show up in bold print, making it easy to see any change from default values.



### Filter for functions & Co.

**In the reworked formula assistant** enter "name" above the field list, and all fields that contain "name" will be visible. This is valid for functions and fields/variables, and saves time with "What was the function name with date?"

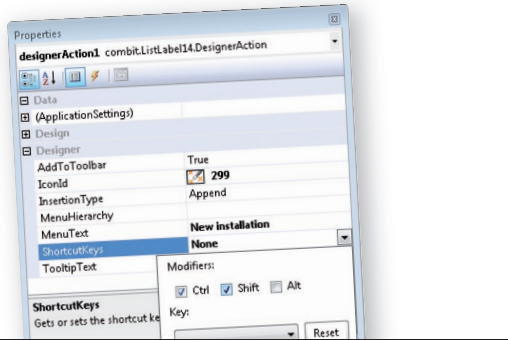


### Along with docked objects

**Ruler guides become magnetic,** if desired via Ctrl-key. When the ruler guide moves, everything moves that is attached to it.

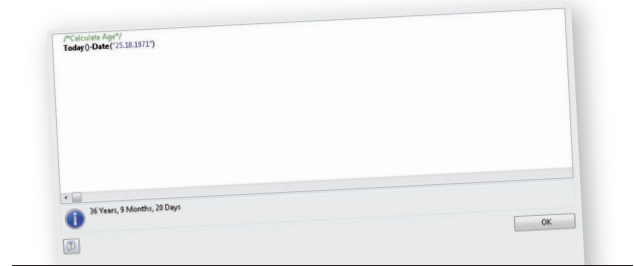
\* in Professional and Enterprise Edition

## List & Label 14 News



### User-defined Designer actions

Already available for subscribers during version 13. Alongside your own functions and objects there are your own actions now. In combination with DOM in the Designer it is possible to select e.g. style sheets with the press of a key.



### Subscribers already have it

... for everyone else it is new. Here's what has happened during version 13:

**Comments in formulas** :: Especially for comprehensive expressions this is of invaluable importance. Refer to the screenshot above.

**Period formatter** :: Also visible above, a new function for formatting time periods.

**Offset** :: TotalPages\$() can now be provided with an additional parameter, in order to deliver the correct result in combined projects.

**User defined data filter property** :: Tables and cross tabs within the report container now have their own data filter property.

**Excel export** :: Direct transfer of the output format to Excel export.

**.NET documentation improved**, direct display of the help text in the IDE and – new to version 14 – in VS 2008 style.

**WPF viewer control** :: Ready for the latest UI generation from MS.

#### Questions?

We are happy to hear from you!  
T +49 (0) 7531 90 60 10  
sales@combit.net

**More information on additional improvements**, pictures in original size and a product movie about the new features will be available before the final release date at [www.combit.net/en](http://www.combit.net/en). The newsletter will keep you up to date!

### Important to know

- ➔ **Release anticipated Oct/Nov 2008**
- ➔ **As a Subscriber – Professional or Enterprise Edition 13 – version 14 is already a part of your subscription package** and so everything is dealt with and paid for. You will automatically receive information from us regarding download or CD delivery. Please register your software, if not already done.
- ➔ **As a customer of the Standard Edition 13 or any edition 12 or older, you can get an early bird upgrade to Standard Edition 14**, as long as you place your order **before Oct 22, 2008**. Save **20%** on the regular upgrade or new license price! Please register your software in advance.
- ➔ **Independent of edition and version, early bird subscriptions** – Professional or Enterprise Edition 14 – are available to all List & Label customers until **Oct 22, 2008**. Pre-order and save **20%** on the regular new subscription price.



© **combit GmbH 2008**, subject to changes and possible errors! This content is only a description and does not represent a guarantee for the quality of the product. Please note that with the third-party product versions that are mentioned, different releases may occur that include other functions. We therefore recommend trying out our free of charge test version in order to avoid any possible problems in advance. All named products and product descriptions as well as logos are brands, are registered trademarks or the property of their respective owners.

combit GmbH  
Untere Laube 30  
78462 Konstanz  
Germany

**Sales & Service Team**  
T +49 (0) 7531 90 60 10  
F +49 (0) 7531 90 60 18  
sales@combit.net

[www.combit.net/en](http://www.combit.net/en)