

Highlights



➔ Designer

- **Report container** allows any sequence of tables, charts and crosstabs
- **Crosstabs** open up new ranges of application
- **Digital signatures** provide security
- **Fixed barcode line width** improves readability
- **New icon style** freshens up the Designer
- **Polished interface** optimizes working with the Designer
- **HTML export** produces results more true to the original
- **Revamped label formats** speed up project creation
- **Color gradients** improve the look of objects

➔ Development

- Saves effort **localizing projects**
- **Java support** creates a new area of application
- **Enhanced OCX control** supports VB developers
- **20 new examples** ease the learning curve
- **Generic lists as data sources** allow you to work with object structures
- **Intelligent word-wrap** makes the output look better

➔ Dates

- **Release:** around October 2006
- **Trust upgrade:** order before **Oct 9, 2006** and save **20%** of the upgrade price
- **Prices and ordering:**
www.combit.net

List & Label 12 – Ready for Take-off

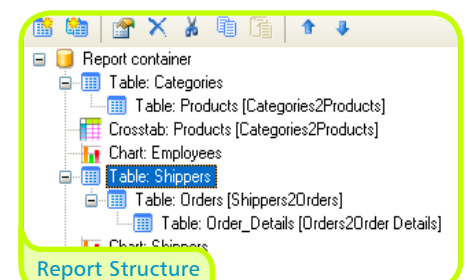
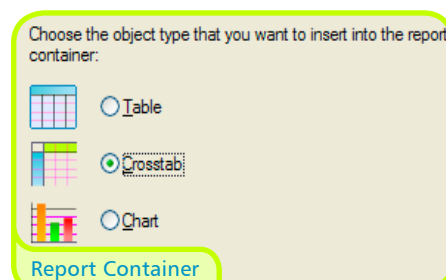
Just like its predecessors, List & Label 12 gives you and your customers real value for money. Take off with report containers, crosstabs, digital signatures, Java support and much, much more. There is something new for everyone. The Designer itself looks refreshed with its new icon design, so that making projects has become even more fun. You will notice that the interface is much more polished in many places and you will save plenty more time now, not least because we were able to accelerate the print engine by 20%. Thank you very much for your feedback through questionnaires, support and training. With it, this will be the best List & Label to date! :-)

○ Report Container and Report Structure

In version 11, we first introduced the multi table object. Now we have enhanced it so that you can insert crosstabs and chart objects into the structure as well as just tables. You will love this for the simplicity it brings and because it saves the necessity for individual control. It was a true pleasure getting rid of those 25 pages in the programmer's manual! Sub-objects now appear to your code as normal tables. If you have code for version 11 with which you control multi-tables, or you are using one of our databinding components, you can now automatically have crosstabs and charts before, or after tables.

It gets better! Charts in table columns were, until now, only something for specialists. Now, you have easy access to this function. You only have to set where the data comes from, and the rest is done by List & Label 12. With a good piece of multi-table code or the List & Label databinding you can control any sequence of: tables and sub-tables; tables, charts and crosstabs; charts in table columns.

The *Table Structure* window from version 11 has now been promoted to *Report Structure* because of its new abilities. Similarly, *Table Object* has become the *Report Container*. With these, you can build up even complex reports without breaking a sweat!



Crosstab Step 1

		2004		Total
		Q - 4	Total	Total
ALFKI	---	---	---	---
Total	---	---	---	---

Formula: `Sum(Orders_Details.Order_Details.UnitPrice) * Quarter(Orders_Details.Order_Details.OrderDate) - 1`

● Crosstabs

A crosstab combines data in several dimensions. It can answer nice questions like "How is the product turnover distributed over the years, and how is it distributed between the employees?" This is possible for the first time with List & Label 12!

Crosstab Step 2

Properties dialog for Crosstab:

- Value: `Sum(Orders_Details.Quantity*Orders_Details.UnitPrice)`
- Displayed Contents: `Cond(Sum(Orders_Details.Quantity*Orders_Details.UnitPrice))`
- Format: none
- Background: 1 [white/black color]
- Font: [Verdana]
- Rotation: 0 [°]
- Layout: Alignment 1 [centered]

Crosstab Step 3

Properties dialog for Crosstab:

- Columns:
 - Repeat Labels: False
 - Break Lines: 1 [Yes]
 - Force: False
 - Minimum Height: 100.0 [100.0 mm]
 - Maximum Size: 100 [100%]

Crosstab Result

	2004				2005				2006				
	Q - 3	Q - 4	Total	Q - 1	Q - 2	Q - 3	Q - 4	Total	Q - 1	Q - 2	Q - 3	Q - 4	Total
ALFKI	---	---	---	---	---	1086	1208	2294	851	1451	230	---	---
ANATR	89	89	---	---	---	480	320	800	---	---	514	---	51
ANTON	---	403	403	---	---	3038	2082	1332	6452	---	---	---	---
AROUT	---	480	480	---	---	1352	---	2143	1909	5484	---	---	---
BERGS	---	2102	---	2102	---	3429	3199	---	6622	---	---	---	---
BULSO	---	---	---	---	---	236	794	---	1080	625	677	---	130
Total	2102	972	3074	4781	6516	6565	4649	22731	1476	2643	411	---	---

	Turnover per customer by employee						
	Callahan	Diavolo	Dodsworth	Fuller	King	Leverling	Peacock
ALFKI	---	1342	---	---	---	960	1208
ANATR	---	---	---	---	89	800	514
Total	---	---	---	2963	779	2157	---

● Digitally Signing Documents

The use of digital signatures is probably a real hot topic for you and your customers these days. So that you can offer a solution to them, we have got together with both leading producers *secript* and *e•sequia/SignCubes* and now support their signatures straight out of the box. Requirement for this is, of course, that the customer's computer has either *digiSeal®* office of *secript GmbH* or the *OPENLiMiT® SignCubes* software with licence keys of *e•sequia holding AG*.

Generally, you can sign multi-TIFFs, text files and PDFs. For this you will find a new tick box in the export dialog. Tick it, and after the export the signing process will start. Depending on the signature type, you will receive one or several files. The signature format can be changed by API.

The signed document may consist of two files, e.g. "invoice.tif" (the resultant file unchanged as a TIF) and "invoice.tif.p7s" (the corresponding signature): The receiver can always check whether "invoice.tif" has been altered since the signature. For this, *secript* and *e•sequia* provide free products.

Digital Signature

Signature task - SCM Microsystems Inc. SPRx32 USB Smart Card R...

Certificate and status

- Status of the certificate's local signature verification
- Validity

Qualified certificate: Information

Subject	Certificate issuer	Serial number
combit Software GmbH :PN Combit Mustermann NKS 03 A 36644	Deutsche Telekom AG email-ca.com Deutsche Telekom AG	2F AA 12 A7 4E 00 CD 29 10

Details



```

// D: Tabellennamen lokalisieren
// US: Localize table names
LL.Dictionary.Tables.Add("Orders", "Bestellungen");
LL.Dictionary.Tables.Add("Order Details", "Bestellposten");

// D: Relationsnamen lokalisieren
// US: Localize relation name
LL.Dictionary.Relations.Add("Orders2OrderDetails", "Bestellungen/Bestellposten");

// D: Feldnamen lokalisieren
// US: Localize field names
LL.Dictionary.Fields.Add("ProductName", "Produktname");
LL.Dictionary.Fields.Add("Quantity", "Anzahl");
LL.Dictionary.Fields.Add("UnitPrice", "Einzelpreis");

LL.Dictionary.Fields.Add("OrderDate", "Bestelldatum");
LL.Dictionary.Fields.Add("ShipAddress", "EmpfängerAdresse");
LL.Dictionary.Fields.Add("ShipCity", "EmpfängerStadt");
LL.Dictionary.Fields.Add("ShipCountry", "EmpfängerLand");
LL.Dictionary.Fields.Add("ShipName", "EmpfängerName");
    
```

Localizing

Localizing Projects

With this new function, we were able to realise an extremely popular request, and hope that one or two people will be pleased :-). Projects are designed first in one language and then greet every user in their local language. To do this, you provide a dictionary for every language by API. The translation can be handled even more elegantly if you interconnect dictionaries or word tables that you already have in use. Loads of time can be saved like this.

The use of the localization features is most comfortable in the components, but of course you will also save plenty of time if you use the DLL functions.

Color Gradients

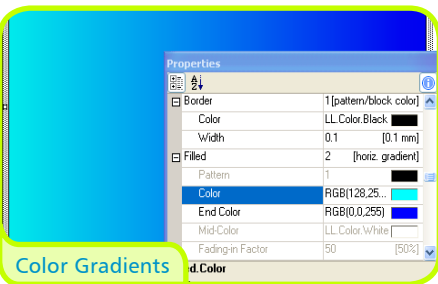
For background colors, rectangle fills and other areas that you could fill with solid color, you can now choose color gradients, and with them, create nice color shading. This puts loads of attractive effects at your fingertips. Share your colourful personality!



Barcode Bar Width

Color Assignment in Chart Objects

And while we're on the subject of colors: in the chart object, you can now assign colors to particular values - just think of election night. Your customers will be delighted to be able to use fixed product colors in their reports.



Color Gradients

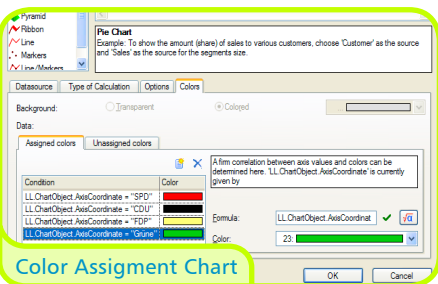
Barcode Bar Width

Another customer request we are pleased to fulfill: in barcode objects, you can now set a fixed bar width. With this, you will always end up with a consistent barcode, regardless of the length of the content.

Just as highly desired was the adjustability of the bar ratio, now available for the code types that were designed for variable ratios, such as Code39 and the 2of5 family.

Optimized HTML Page Breaks

Until now, HTML object breaks were always carried out on the image plane. This meant if you were unlucky the page break would cut straight through a line of text. Now you will always receive a tidy result, because the object first analyzes the data and tries not to cut up any text.



Color Assignment Chart

New Barcode

As usual, there is a new barcode type in this version. Once again, all popular types are provided for. The new one is called SSCC (Serial Shipping Container Code), which has been rising in importance in the logistics industry.

Variables, Formulas and Expressions

Information can be inserted into your project in two ways, by entering "Fixed text" or using "Fields" and "Variables".

Information can be inserted directly into the project as "Fixed text", e.g. a sender line on an address label or a column heading in a list. Fixed text

List & Label 11

Variables, Formulas and Expressions

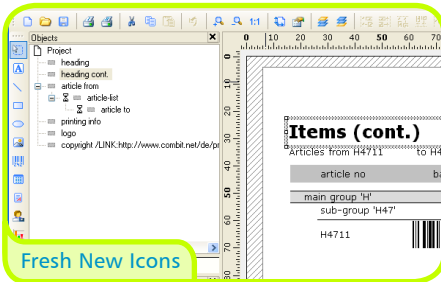
Information can be inserted into your project in two ways, by entering "Fixed text" or using "Fields" and "Variables".

Information can be inserted directly into the project as "Fixed text", e.g. a sender line on an address label or a column heading in a list. Fixed text

List & Label 12

HTML Page Breaks





Polish and Shine in the Designer

We have made changes to the Designer in lots of places, in order to make working with it faster and more pleasant for you and your customers. For this, we have taken many customer suggestions from questionnaires, training and support to heart. We will only mention a few here, and will let you be surprised by the rest.

All icons have been spiced up. The workspace in the Designer looks fresh and making projects will be even more fun than before.

New zoom buttons in the toolbar let you change the zoom level in the workspace, saving you from switching to a menu or the keyboard.

Better-looking project sketches in the file open dialog, through improved antialiasing and true colors.

The property list saves its settings for every object type. This means the appropriate sub-properties will remain open or closed. Especially when working with more complex projects with lots of objects that you want to make similar changes to, you will find this extremely helpful. If you want to have a quick look at one object while working on another, you can now switch back and forth easily.

Special characters in RTF text can now be easily inserted: page breaks, optional hyphens and non-breakable spaces.

Separators between table columns can be moved more easily.

The resulting "invisible" separators when you had switched off the frame in a table row used to be difficult to move. In these cases, subtle dashed lines are now shown and are easy to grab (in the layout and layout/preview modes).

This and that

- Lots of new functions, including those for calculations in crosstabs.
- New item "Delete" in the context menu for help lines.
- Project > Settings has been removed – the properties window is now decorated with project parameters when no objects are selected.
- Double-clicking a picture now opens a file selection dialog.
- In the selection dialog for a new table row definition, you can now also jump straight to the field selection assistant
- Code 39 no longer needs to be framed with asterisks.
- Table columns and text object paragraphs now have appearance conditions.

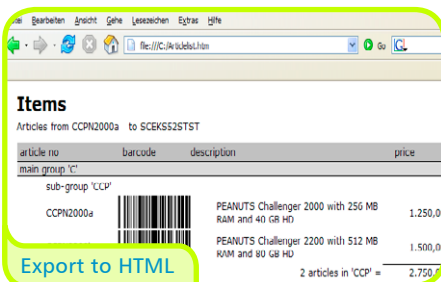
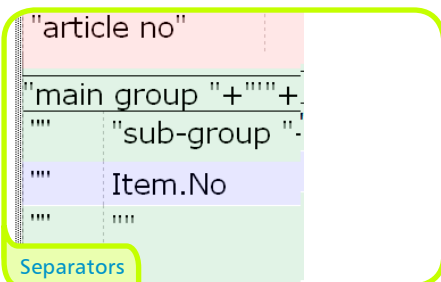
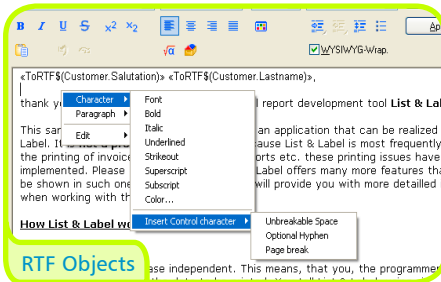
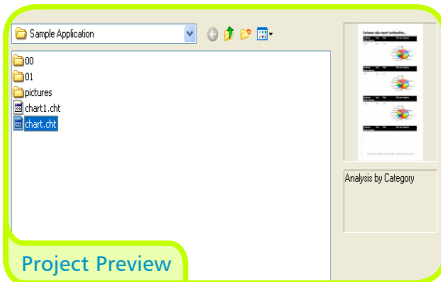
Export Improvements

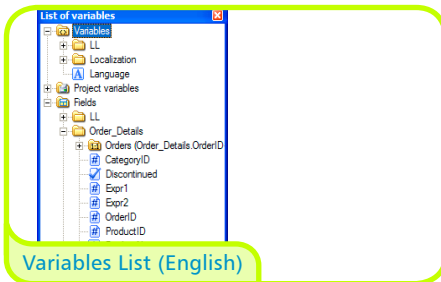
HTML export now uses cascading style sheet (CSS) tags for table frames and achieves significantly better results, especially when you are using individual frame formats.

Export to Excel is now capable of making one worksheet per page and naming them throughout, e.g. "Article list P. 1/2/3/...".

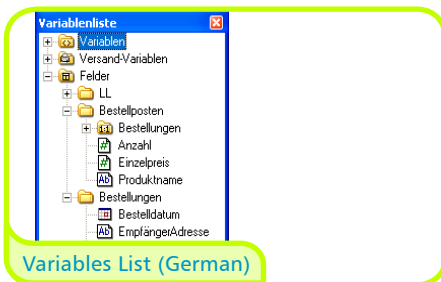
Pure data export can now produce Unicode files, provided all Unicode characters come from the same code page range, e.g. only Japanese or only Chinese etc.

Multi TIFF, PDF and TXT support digital signatures, see page 2.

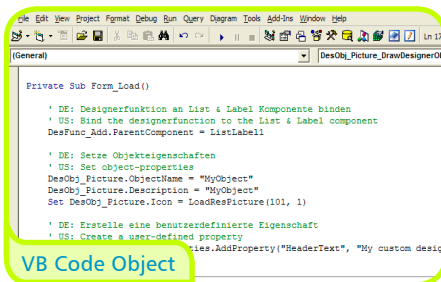




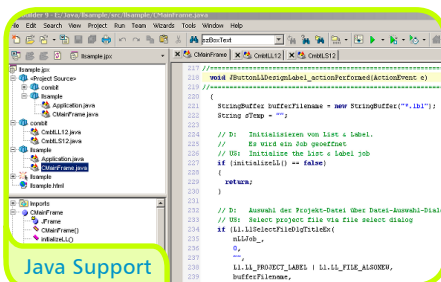
Variables List (English)



Variables List (German)



VB Code Object



Java Support

Order your upgrade now at trust price and save

20%
of the upgrad price

Valid until Oct 9, 2006

● VCL, .NET and OCX Components

With dictionaries in the components, we have made it very easy for you to localize List & Label projects (also see page 2). For example, there is a new structure "ListLabelDictionary" for .NET, with which all displayed field and variable names can be localized. With exactly the same project file, you would see "ProductName" in the US and "Produktname" in Germany. This still works if the project is changed, saved and sent to Brazil – only language-independent abbreviations or, for instance, the English names are saved in the project. The display in the Designer then changes depending on the language. This works in the same way with VCL and OCX.

.NET: New databinding options

Since Visual Studio 2005, .NET supports type safe generic lists. This means you can create lists of objects by coding, for example:

```
myList = new List<Person>;
```

in which "Person" can be any desired class. You can now bind such lists to List & Label simply by writing

```
LL.DataSource = myList;
```

Database-independent reporting made simple! The trick, however, is that it also works on multiple levels, i.e. "Person" can itself contain a list of other classes. In the Designer you can find the data in this list as a sub-relation.

OCX: You can now insert your custom designer objects and functions when using Visual Basic. The user will not be able to tell your custom extensions from the built in ones.

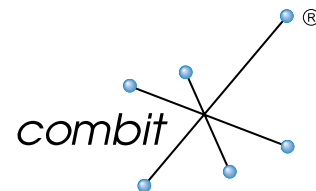
● JAVA Support

"At last!" we hear you cry! A JNI (Java Native Interface) wrapper DLL makes all of our DLL functions available in JAVA. An example demonstrates the printing of labels and lists with JBuilder and Eclipse. Please note: the computer on which the reporting is running must be a Windows system, despite coding with JAVA.

● More

Over 100 programming examples are included in the List & Label 12 package, including support for nearly 20 different programming languages. 20 of these examples are brand-new.

We've updated the label templates, so you and your customers are completely up-to-date.



Good to Know

➔ **You will be given a free download upgrade** if you purchased a new license of List & Label 11 after Aug 1, 2006. For this, please register your copy of version 11 before Oct 30, 2006, ideally online.

➔ **Equip your team now for less**

With version 12 we will be slightly increasing our prices after keeping them stable for a long time. Equip your team with List & Label 11 for the old price now and reap the benefits of a free download upgrade to version 12.

➔ **Save money** by ordering your upgrade by **Oct 9, 2006.**

We thank you for your trust advance with the trust price: You save **20%** on the regular upgrade price!

➔ **Save money** by downloading: 20€ plus post and packaging simply by downloading directly from our shop.

Questions?

We are always there for you, and will gladly pass on our zeal for List & Label 12.

Phone +49 7531 / 90 60 10
sales@combit.net

Release Date

Anticipated **October 2006**

Prices and Ordering

www.combit.net

© **combit GmbH 2006**, Changes and errors may occur. The statements made are only descriptions and do not constitute any guarantees regarding the condition and the suitability of the product. Please be advised that functional differences may occur in the different releases of non-combit products. We suggest that you try a free test version to ensure that no problems occur. All product names, descriptions and logos are trademarks, registered trademarks or property of their respective owners.



combit GmbH
Untere Laube 30
78462 Konstanz
Germany
www.combit.net

For customers:
Sales and Service Team
Phone: +49 7531 90 60 10
Fax: +49 7531 90 60 18
eMail: sales@combit.net

For journalists:
Brita Dannenmann
Phone: +49 7531 90 60 13
Fax: +49 7531 90 60 18
eMail: pr@combit.net