

List & Label[®] 11

The results of our survey this year plus your steady feedback to our sales and support departments (thank you very much for that!) contributed to our decision to concentrate on three main areas for version 11.

1. Simplifying the Designer, to make it easier for end users, 2. much easier support for multiple tables in design and print, be it as sub reports or as totally independent tables and 3. enhancements in the .NET component, for example data binding with a consistent support of relational structures.

To enable the output of nearly any hierarchic report the table object has undergone extensive revisions. We made sure that it's easy to use for end users too. Additionally we rewrote the data binding for the .NET and VCL components to provide you with the best support for that new feature. List & Label's strongest point has been to be able to work database independently. This has now been extended considerably! List & Label 11 is able to fulfill approximately 90% of all reporting needs with data binding under .NET. Add a lot of new, very nice features to it and you'll receive what we've got: a very feature rich List & Label version 11. "This is definitely the best version we ever had" said Jochen Bartlau enthusiastically. Jochen has been project manager for List & Label for many years now and is exceptionally proud of the new version. We completed the above-named changes with aggregate functions, support for NULL values and more comfort with outputs by adding a new print range selection and support of "page 1 of n". Besides a renewed full layout Excel export, a lot of helpful and valuable details have been included that we named "more fun in the Designer". These include features like rotational header lines in the table object and new frame properties which are waiting for developers and end users. And as always you will find a lot more features that we were not able to mention in this News.

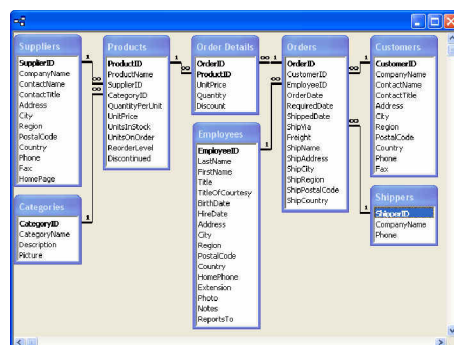
What we definitely have to mention is that you save 20% of the regular upgrade price when subscribing to the upgrade before August 15, 2005. That's more than ever before.

MULTI TABLES / SUB REPORTS

One of the most eagerly awaited customers' wishes was direct support for sub reports. That's why we are very happy to announce that this has been included in version 11 and especially about the fact that this new feature works as easily as possible, both in and out of the Designer. What does that mean? Well now you can define relations between tables and sub tables as well as several, independent tables. With the new feature you can now print clearly arranged analyses about your customers, orders and order details or even more complex structures. New commands allow you to pass database tables including their relational structure and possible sort orders – it therefore now becomes a breeze to handle relational databases. The complete data binding of the .NET component has been revised completely – now it's a piece of cake: 1:n relations are declared automatically and even backwards resolved as 1:1 relations.

Here with the example of the Northwind database showing the interdependencies of the tables and a possible report with sub reports in List & Label.

Read more on the next page.



HIGHLIGHTS

- **Multi tables and sub reports:** comprehensive revision of the table object, clearly arranged assistance of relational databases
- **.NET component:** Rewrite of data binding, new online help
- **Other programming languages:** extensive samples, revised VCL data binding
- **Aggregate functions and NULL values:** no sum variables necessary anymore, flexible statistical analysis of data
- **More fun in the Designer:** simple, convenient formatting, fast and easy frame types, new project assistant, common properties can be set for several objects at the same time
- **Table object:** rotational header lines, deactivatable line definitions
- **Enhanced convenience for data output:** print range selection and support of "page 1/n"
- **Preview:** new toolbar controls
- **Excel export revised:** sharply decreased number of required lines for full layout mode, export about 85% faster
- **New 2D barcode:** Azetec (Professional Edition)

DATES & CONDITIONS

- **Estimated release date:** End of August 2005
- See prices and order direct at www.combit.net
- **Bargain:** Order your upgrade now, enjoy our trust price and save 20% of the regular upgrade price!

Valid until August 15, 2005

Customers					
Pos	Company	Address	City	CustomerID	
1	Alfreds Futterkiste	Obere Str. 57	Berlin	ALFKJ	
Orders					
Pos	CustomerID	OrderDate	ShippedDate	Freight	OrderID
1	ALFKJ	08.01.1900	09.01.1900	29.46	10643
OrderDetails					
Pos	OrderID	ProductID	Quantity	ProductName	UnitPrice
1	10643	28	15	Riesle Sauerkraut	45.00 €
2	10643	39	21	Charreusse viande	10.00 €
3	10643	46	2	Spegesild	12.00 €
					total: 75.00 €
Orders					
Pos	CustomerID	OrderDate	ShippedDate	Freight	OrderID
1	ALFKJ	10.01.1900	10.01.1900	61.02	10692
OrderDetails					
Pos	OrderID	ProductID	Quantity	ProductName	UnitPrice
1	10692	63	20	Veje-spread	43.90 €
					total: 43.90 €

MORE ... MULTI TABLES / SUB REPORTS

Hierarchical Variable Window

As soon as the database tables have been passed, the fields are automatically shown in a hierarchical structure. All fields of each database table are clearly arranged in a sub folder.

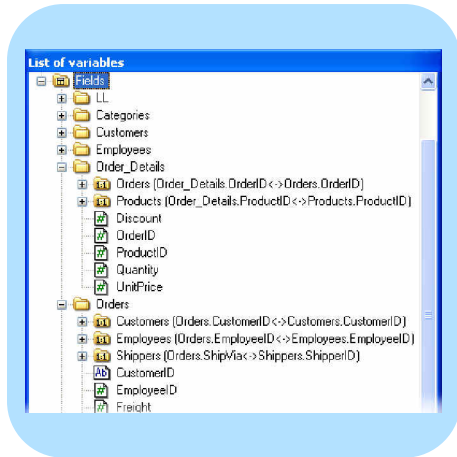
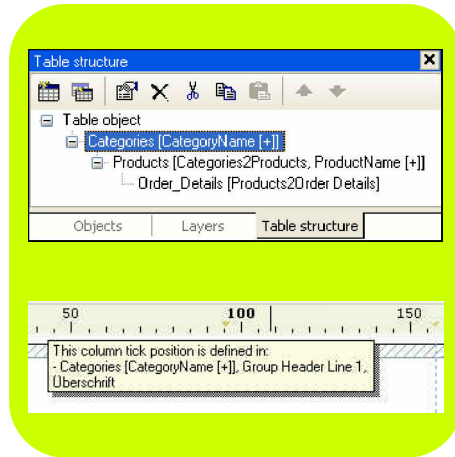


Table Structure

In the tool window "table structure" the user chooses the sequence of the desired sub tables by mouse click. Simple and precise.

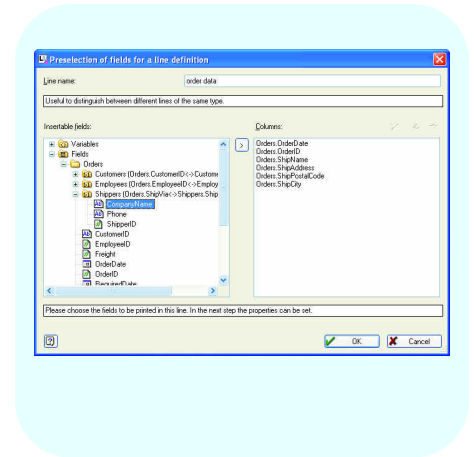
Tickmarks for Ruler Areas

Help to exactly adjust tables and separators.



Enhanced Project Assistant

Now able to handle hierarchical structures, the project assistant is of great help even when creating large and complex projects. You will benefit from that not only when creating new projects, but can even use it for each new table line.



.NET

Data Binding Accelerated

Besides the automatical support of multi tables / sub reports you will enjoy these new features even when working without relational requirements. The usage of each variable is checked, which means that only required values will be actually passed. These requests are even cached. This makes your application faster!

Type Safe Transfer of NULL Values

If available, schema tables of connected databases are viewed automatically. If there are numbers within a column, a NULL value will be passed as a number, too.

Excellent Online Help

Long time longed for, now it has become a reality. The new online help precisely lists properties, members etc. and makes them easily accessible. This guarantees perfect assistance and a faster start.

"Silent" Print

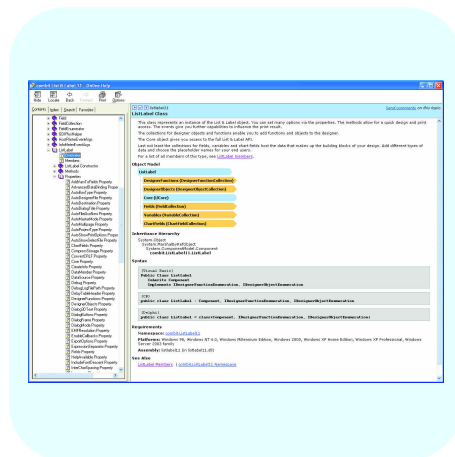
If desired, a new boxtype completely suppresses the progress bar while printing.

Collection "ExportOptions"

Thanks to the implementation of "ExportOptions" you can now set the export options at an arbitrary point in time, prior to the printing process.

Order Your Upgrade
now and Save
20%
of the Upgrade Price!

Valid until August 15, 2005



NEW 2D BARCODE

Aztec (Professional Edition)

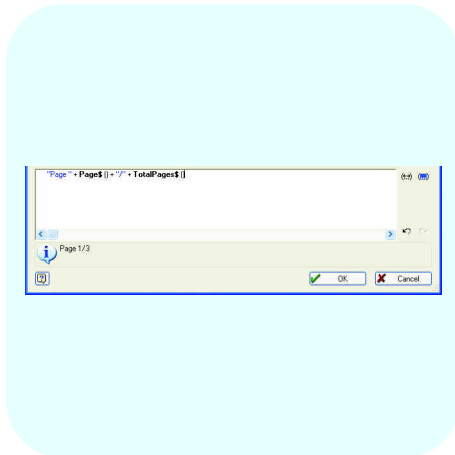
As you know already List & Label contains a wide variety of barcodes, and along with each new version comes a new one. This time it's Aztec, which is a highly optimized, fault tolerant symbol. Its most important properties are great scan tolerance and high data density. The Aztec is predominantly used in medical engineering, transportation and administration. As you can see there are a lot of options to let your application gleam.



OUTPUT PAGE BY PAGE

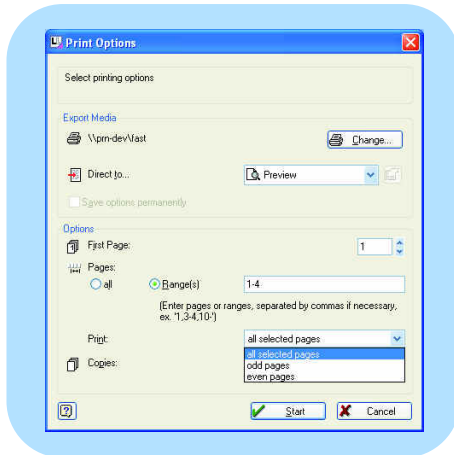
Page 1/n

Previously you were forced to determine the number of pages by help of the two-pass-technique prior to printing in order to print "page 1 of 20". With List & Label 11 this becomes redundant. You'll save time and ease the processes considerably.



Print Range Selection

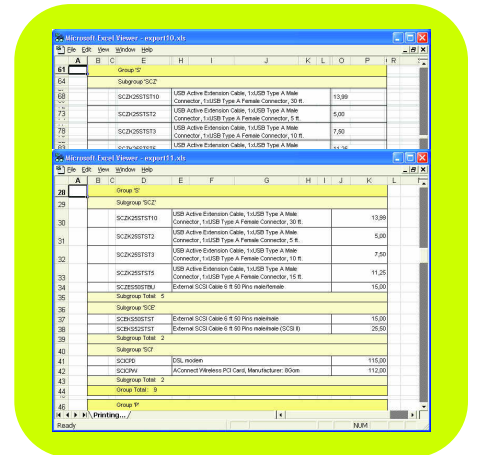
With the enhanced print option dialog you can specify exactly those pages you plan to print – in office style. Besides the new range specifiers as "1-3", the options "even" or "uneven" pages are additionally available. This function saves unnecessary print outs and of course the paper.



EXCEL EXPORT

Fast and Slim

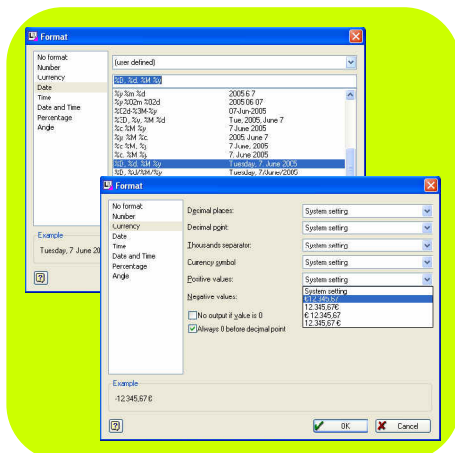
Previously the "full layout" option focused on an exact display. Now we slightly round up the results. As a result, it is definitely optimized regarding criteria like quality and usability of the result: the number of cells in each direction has been decreased by 40-50% and it's possible to save 85% of the previous typical printing time.



MORE FUN IN THE DESIGNER

Format Editor

You, and most importantly your application's end users can set the desired formatting much easier and faster by the help of the new format editor. Formulas partly become redundant, since you just need to choose a model "that's the way it looks like". This makes the Designer easier to use and easier to access, even for beginners. We are sure, your application's end users will appreciate this new convenience. And if you need a very swift solution, just take over the system's formatting.

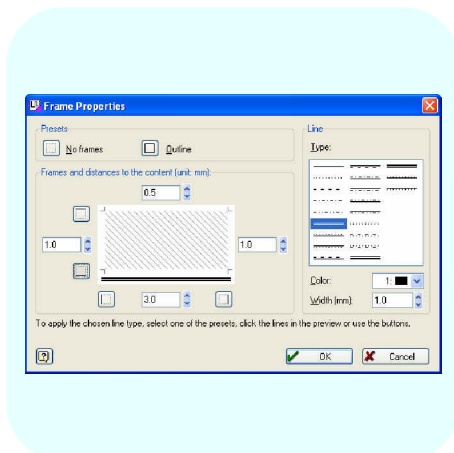


Frame Editor

In List & Label 11, there's a new editor for the creation of frames. Now the activation and deactivation of frames is done by just one mouse click. This saves time compared to former versions, where a lot of single steps were necessary to do that. Furthermore, almost every object can have frames. For your individual design requirements, you can now set the frame style quickly and easily.

Changing Common Properties

By selecting several objects at the same time, you now have the option to change common properties all at once.



Rotational Header Lines

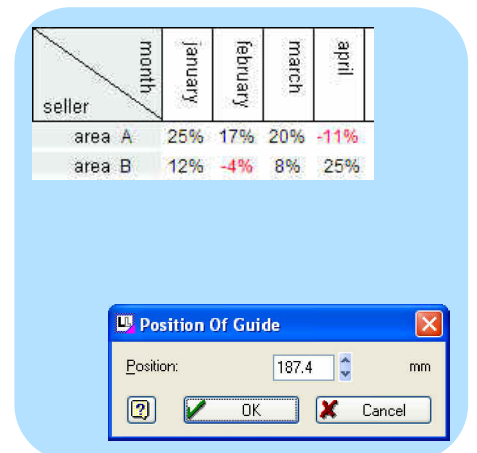
Thanks to this new function, text can be rotated within table columns. This is very helpful especially if you need longer titles for narrow columns, because you will no longer need to shorten or wrap the title.

Suppressible Line Definitions

A lot of data lines often cause a rather complex result. That's why it's now possible to deactivate redundant data lines and focus on the essential data.

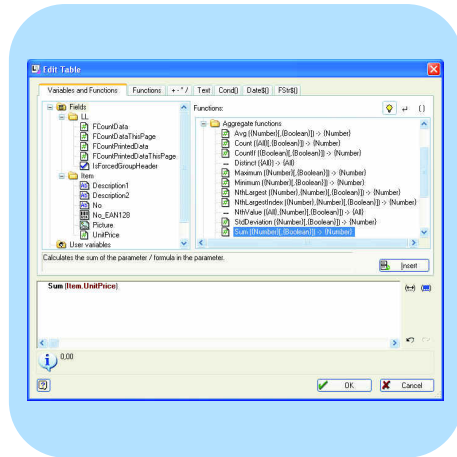
Position Dialog for Ruler Guides

Ruler guides now have their own position dialog. You can access it via the context menu.



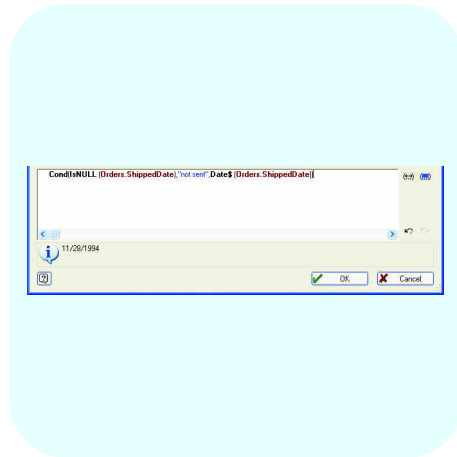
Aggregate Functions

With List & Label 11 you won't need sum variables anymore to completely analyse whole data rows regarding criteria such as sums or other statistical values. Now this works directly and most of all faster by means of the new aggregate functions as for example sums, maxima, minima, number etc. Just imagine the time you will save!



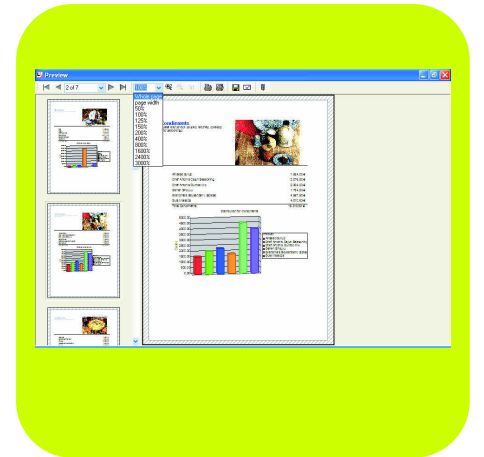
Support of NULL Values

List & Label now makes the subtle difference between value = NULL (no value available) and value = 0. This perfectly rounds up the new functions for handling databases, complements the new aggregate functions and also equips your application with modern statistic functions.



New Toolbar Controls

To view details in the preview, you can now use new controls for zoom selection which are available together with the current page within the expanded toolbar. The viewer controls for .NET and Delphi as well as the viewer OCX benefit from this feature, too.



GOOD TO KNOW

Order Your Upgrade now and Save **20%** of the Upgrade Price!

Valid until August 15, 2005

© combit GmbH 2005. Changes and errors may occur. The statements made are only descriptions and do not constitute any guarantees regarding the condition and the suitability of the product. Please be advised that functional differences may occur in the different releases of non-combit products. We suggest that you try a free test version to ensure that no problems occur. All product names, descriptions and logos are trademarks, registered trademarks or property of their respective owners.

Free Upgrade

You'll receive your upgrade free of charge if you order your new licence of List & Label 10 after June 27, 2005. Important: To receive the upgrade, register your version 10 no later than September 30, 2005. We recommend that you register online!

Save Money by Trusting in Us

If you subscribe to the upgrade until August 15, 2005 we say Thank You for trusting in us. You save 20% of the regular upgrade price. That's about 81 Euros when ordering the upgrade of the Professional Edition!

Save Money by Downloading

Save another 20 Euros plus the shipping costs by downloading the upgrade directly from our online shop. Serve yourself and save!

Release Date

Estimated end of August 2005

Headstart with the eNews

If you haven't yet subscribed to the combit eNews we strongly recommend you to do so. Please subscribe on our website.

Your Advantages with the eNews

- You are well ahead of print news readers
- You are able to react better to time sensitive prices like the trust price
- You reduce the amount of paper on your desk
- You act environmentally conscious

