

Shaping Tomorrow's Reports

List & Label 23



LL23 Highlights

Web/Cloud and .NET:

Report Server, Ad-hoc Designer, relational links between diverse data sources, data provider for Salesforce, ...

Enhanced Performance:

Accelerated Designer startup, faster printing, ...

Designer:

Virtual formula variables, new pie/donut chart features, highlighted sections in charts, SVG graphics, context-dependent crosstab editing, enhanced SVG export options, ...

Web/Cloud and .NET



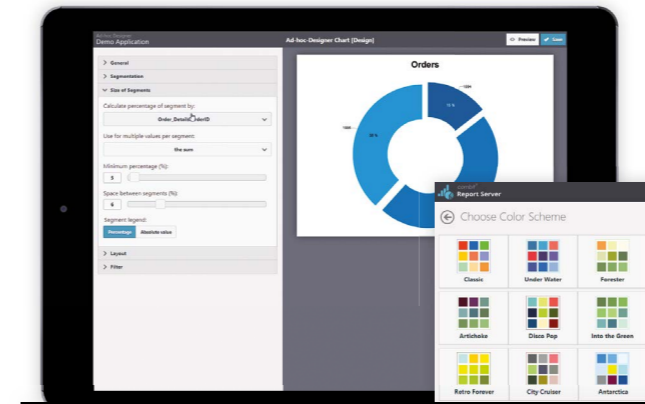
Report Server Now Included

The Enterprise Edition now includes the combit Report Server. This is a cutting-edge, web-based reporting solution you can install and start using right away – without any programming. It runs in any browser, on any device, and lets you configure data sources, and easily create reports plus previews using the Ad-hoc Designer. Richer layout functionality is available to you and your customers from the optionally installable List & Label-based Report Server Designer. A wide range of export formats means you can provide reports in the form required by the recipient. Reports can also be generated and distributed (e.g. by email) according to a predefined schedule.

The Report Server saves you significant development time, allowing you to focus on other functionality. As a result,

your server solutions are market-ready much sooner. You are free to distribute the Report Server to your customers with your application, without paying an additional fee. An interface is provided that lets you transfer fully configured data sources and reports from your application to the Report Server. These are then available in the browser.

You can also distribute the Report Server to your customers as a stand-alone software product, independent of an application, provided that the customer licenses the List & Label Enterprise Edition. We will provide support to these Report Server customers. Best of all: despite these major added benefits, the **price of the Enterprise Edition remains the same.**



Ad-hoc Designer

There is now a completely browser-based alternative to the locally installed Web Designer: Ad-hoc Designer. It is lean, attractive and up-to-the-minute. It is available as a stand-alone control. You can integrate it into your Web applications quickly and easily, enabling your customers to create simple reports in a browser – on almost any device (including tablets), and any operating system. Your users can switch to our Windows-based Web Designer whenever they need to.



Relational Links Between Data Sources

To combine and associate data from multiple sources, you can now define relations between diverse sources quickly and easily. For example, you can combine customer data from an SQL table with an online order from your web store in CSV format. Most of the data providers included with List & Label can be linked by this way. If you implement a corresponding interface, your own data providers can use this feature, too.



New Data Provider: Salesforce

Integration with the Salesforce web service for direct access to the entire Salesforce data model.

Enhanced Performance

Measured Variable	LL22	LL23
Process Memory	67,5 MB	41,8 MB
Number of DB Queries	630	2
Time for Opening the Designer	5,7 s	0,9 s

With data providers



Faster Designer Startup

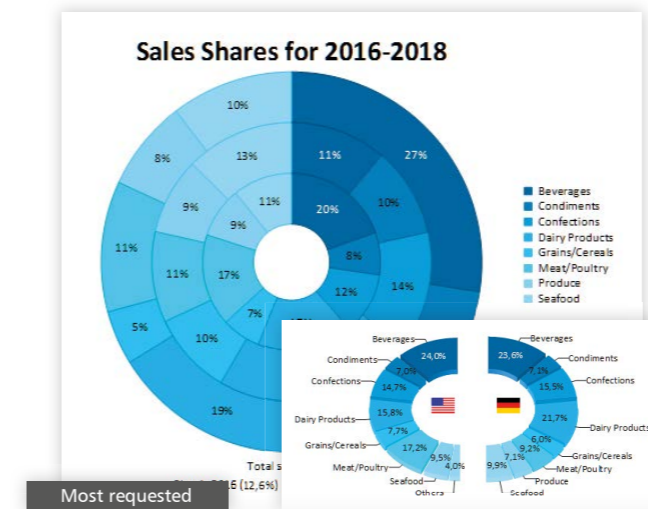
Your users will be delighted that the Designer now launches much faster, especially with large data structures. Detailed information on the used data structures is not retrieved and made available unless the user explicitly queries it. This significantly reduces the number of database queries executed. The Web Designer also benefits from faster processing: it requires less CPU power and, more importantly, less bandwidth.

Faster Printing

An array of improvements in the preparation of data structures for printing and exporting have substantially reduced database-server loads. This leads to faster printing speeds. If you create your own data providers, you can also benefit by making a few minor changes.

- In addition, when report parameters are used for filtering, LL recognizes when only distinct values are required and optimizes database queries accordingly.
- The memory footprint of crosstabs has decreased significantly, especially when crosstabs span shadow pages.

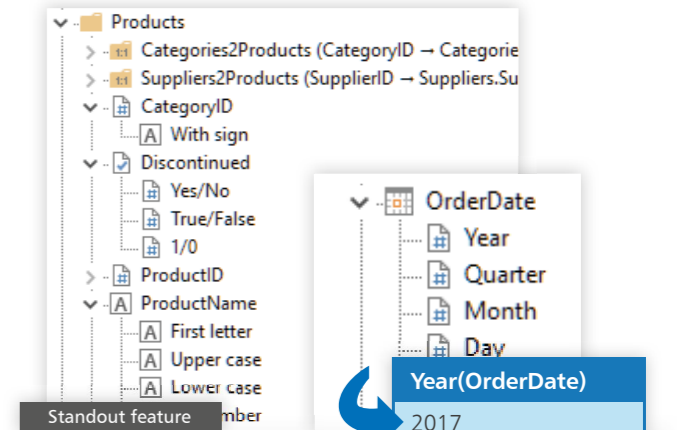
Designer



New Features in Pie/Donut Charts

Your users can now define multiple data rows that are then displayed in the form of concentric rings. This makes it easy to compare time periods, for example.

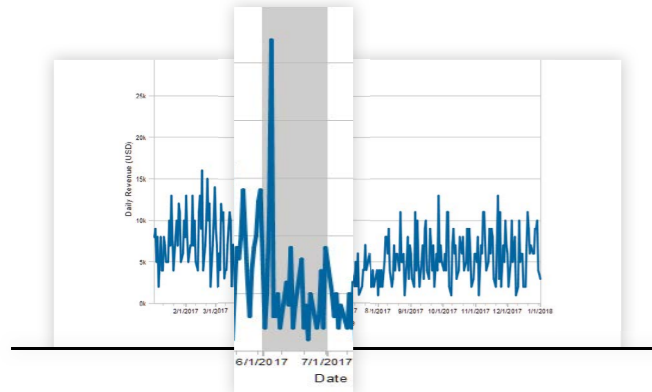
Partial pie and donut charts are now available – enabling data to be displayed in a semicircle, for example.



Virtual Formula Variables for Drag & Drop

This feature is ideal for less experienced users, and a great shortcut for power users: date, numeric, character and Boolean fields can be expanded in the tree view, allowing users to drag and drop the format they want, e.g. to show the year only, with currency symbol, with no decimal places, etc.

Designer




Highlighted Chart Sections

Specified horizontal or vertical sections of a chart can be color highlighted to make them stand out. As a result, readers can identify and assess key information in charts at a glance.

Description

Yellow Gallardo



The Lamborghini Gallardo (/ɡæˈʝɑːrdoʊ/; Italian: [ɡaˈʎardo]) is a sports car built by Lamborghini from 2003 to 2013. It is Lamborghini's best-selling model with 14,022 being built throughout its lifetime.

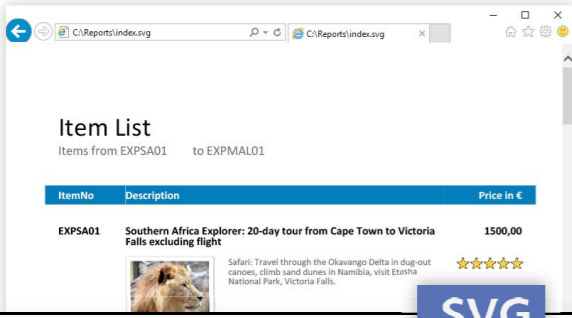
Wikipedia contributors. "Lamborghini Gallardo." From Wikipedia, The Free Encyclopedia. Image courtesy of I, Tomeq183 licensed under the CC.

Most requested

.SVG

SVG Format

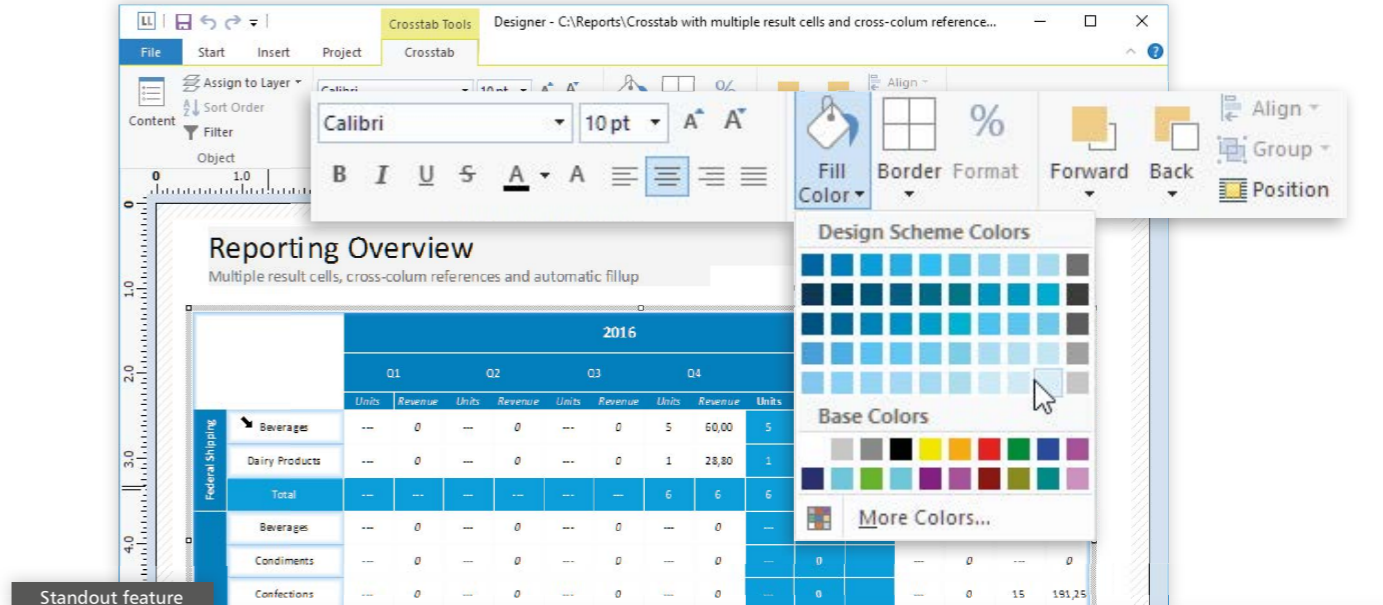
We have added SVG (scalable vector graphics) to the wide range of formats supported by List & Label. The HTML exporter preserves SVG graphics in their original format, ensuring the best results on the Web.



.SVG

Comprehensive Redesign of SVG Export

The SVG export feature has been completely redesigned, and almost all previous constraints have been eliminated. SVG format is perfect for sharing or displaying reports in the latest browsers, as there is no loss of resolution when images are zoomed – they remain crisp and clear.



Standout feature

Context-Dependent Crosstab Editing

Using the many options available for crosstabs is a piece of cake with the new context ribbon. You can now change color, alignment, font, etc. without opening the properties dialog. And if you are using a data provider, the crosstab is

rendered with real data. This gives you a better idea of what the crosstab will ultimately look like, and puts an end to laborious trial-and-error formatting.

Further Designer Features

- ✓ A choice of line styles (dotted, dashed, solid) are now provided to improve clarity in line charts with multiple data series or a second axis.
- ✓ Previews can now be displayed on a screen in actual size. For example, a page in Letter-format is shown in Letter paper size.
- ✓ When you use date type report parameters, you can now display a selection control for the time portion of dates.
- ✓ The minimum and maximum aggregate functions now support date type parameters.

Your Version 23!

Subscribers

With an active Professional or Enterprise Edition you already have LL23 included – and you are all set. You'll receive information on the download. If you have already registered your previous version, your update will already be registered and ready to collect. Otherwise, please register the previous version.

New Customers

Start now with version 22 and get version 23 without additional costs, either as a subscription update with the Professional or Enterprise Edition or as a free Standard update. Please register your license by Oct. 25, 2017 and you'll receive information on the download.

www.combit.com

combit GmbH
Untere Laube 30
78462 Constance
Germany

⋮

Sales & Service Team
T +49 (0) 7531 90 60 10
F +49 (0) 7531 90 60 18
service@combit.com



© **combit GmbH 2017**, subject to changes and possible errors! This content is only a description and does not represent a guarantee for the quality of the product. Please note that with the third-party product versions that are mentioned, different releases may occur that include other functions. We therefore recommend trying out our free of charge test version in order to avoid any possible problems in advance. All named products and product descriptions as well as logos are brands, registered trademarks or the property of their respective owners.