

Charts

The LL Designer now offers further chart types. The already broad choice has been extended to include radar and treemap types. That means your users can enhance their reports with even more up-to-the-minute visualization features. Vertical coordinate lines can now be defined in chart layout. Charts can be conveniently sorted by value.

Charts can now also display Top-N data. Furthermore, all other data not included in the Top-N can be consolidated to show its relationship to the Top-N data.

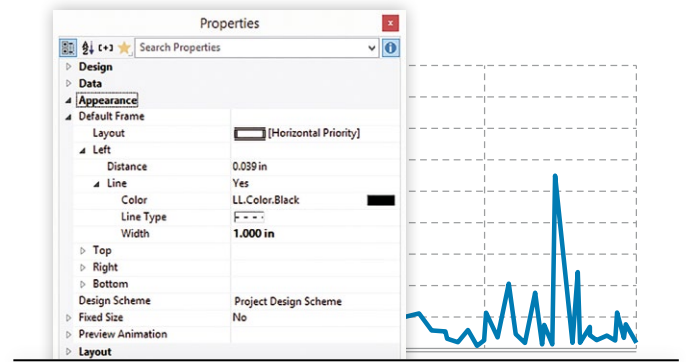
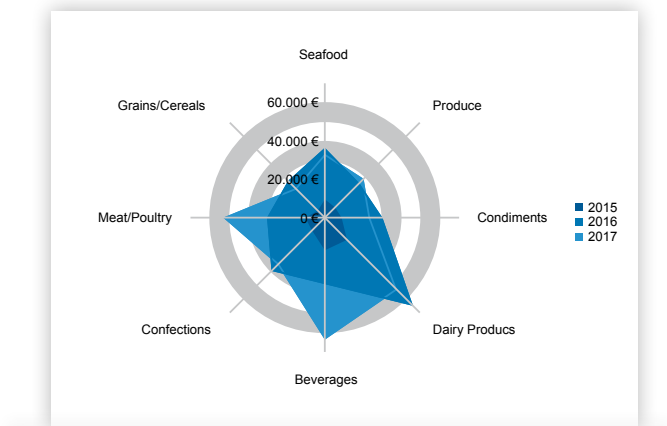


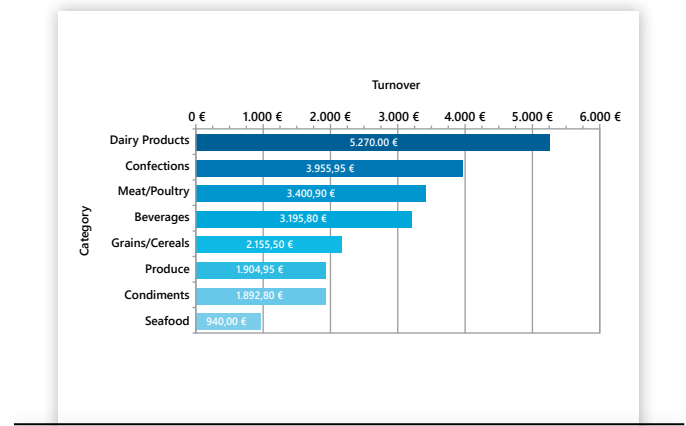
Chart Layout

Line types can now be selected for horizontal and vertical coordinate lines. You can now optionally assign fixed symbols in charts yourself.



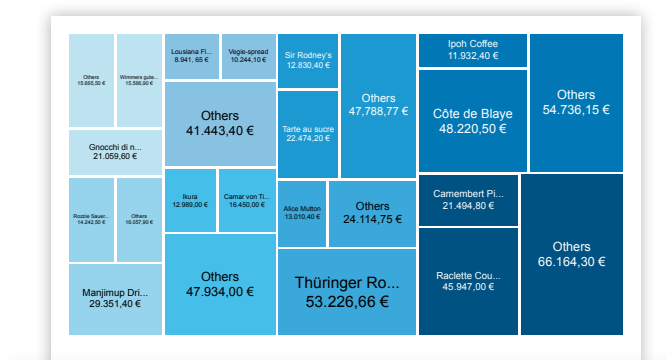
Radar

Radar charts visualize relationships between multiple categories with lines or shapes, simple or stacked. Where shapes overlap, you can draw outlines to show what is hidden.



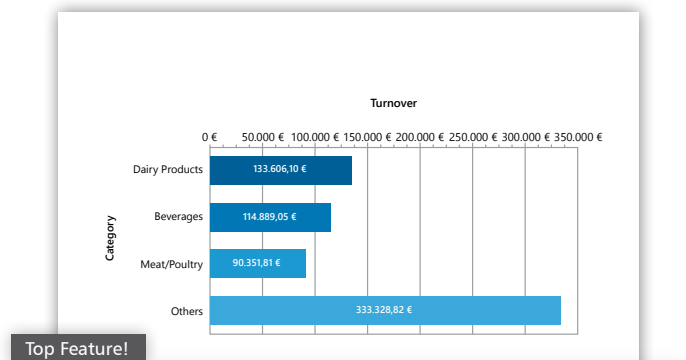
Sorting Charts by Value

For the sake of clarity, you can now sort chart contents by result values, and not only by the names of data series.



Treemap

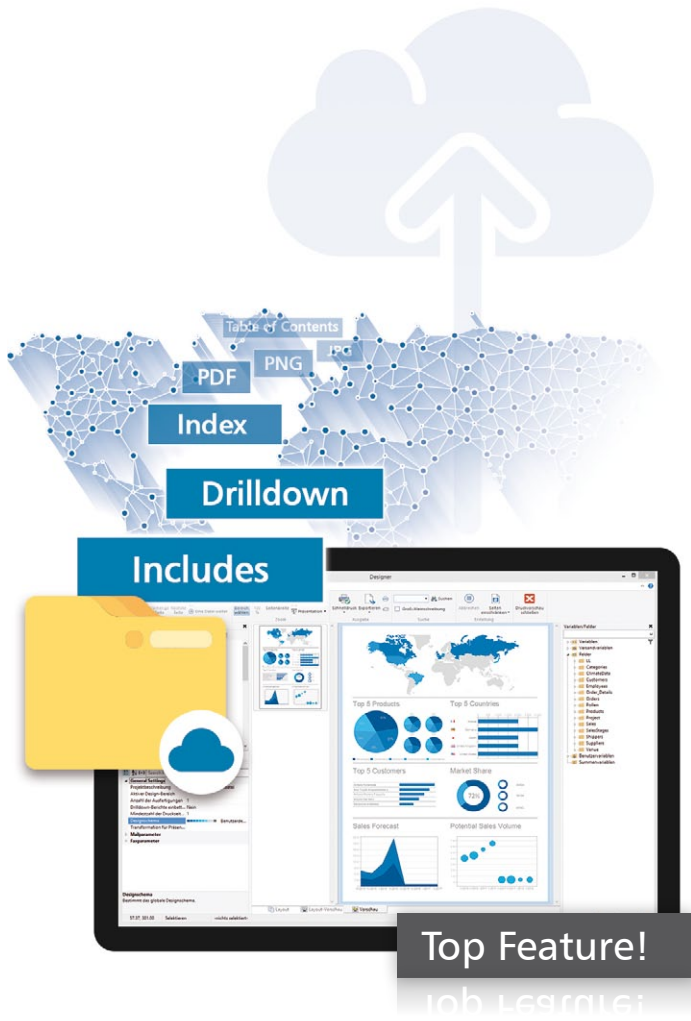
Treemaps display hierarchical data in the form of rectangles containing other rectangles (nested). Their size and position reflect relationships between data values. In addition, you can drill down via report parameters to see more detailed information.



Top-N and "Others"

You can now highlight key information in a chart using Top-N to limit the data shown. Data that does not meet Top-N criteria is consolidated as "Others". This feature works in most chart types and crosstabs.

.NET

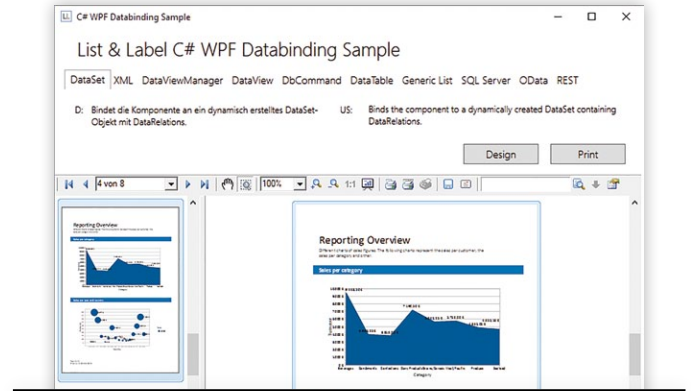


Virtual File System (Repository)

The new repository removes a number of major limitations on web-based projects. The repository gives the Web Designer new capabilities, bringing its functional scope more in line with the classic desktop Designer:

- Includes
- Drilldown support
- Table of contents
- Index

Standard desktop/server applications also benefit from the repository as it means all elements of a project can be streamed from a database. Wherever files can be selected in the Designer, those files will be provided by the virtual file system. This feature only requires implementation of the interface for the repository (sample code for an SQLite database is provided). LL performs all other tasks automatically.



WPF Wrapper for Preview

This new control introduces an array of new features for WPF: display of pages created while printing, interactive sorting, report parameters, and expandable regions. The existing WPF preview control is still supported.

Features for Pros

List & Label has proven its mettle under real-life conditions for more than 20 years. The result is a component that is feature-rich, extremely stable, and comes with reliable support. We are now introducing long-term support. In addition, a new logging application and interface offer enhanced logging functionality.

Long Term Support (LTS)



The Enterprise Edition of LL22 comes with long-term support: for older versions, the period is now approximately two years – until a new LTS version (22, 24, 26, etc.) is released. During this time, we accept error reports from active Enterprise subscription holders and issue bug fixes for the current LTS version. LTS extends the availability of comprehensive support for developers whose products have longer release cycles.

Debwin4

Debug output from Web applications and services can now be logged quickly and easily, regardless of the process or its user context. Debug messages are classified according to predefined levels, such as warning or error. These levels, in addition to thread ID, timestamp and free text, are employed to filter output for targeted analysis. In addition, logs in multiple tabs can be compared.

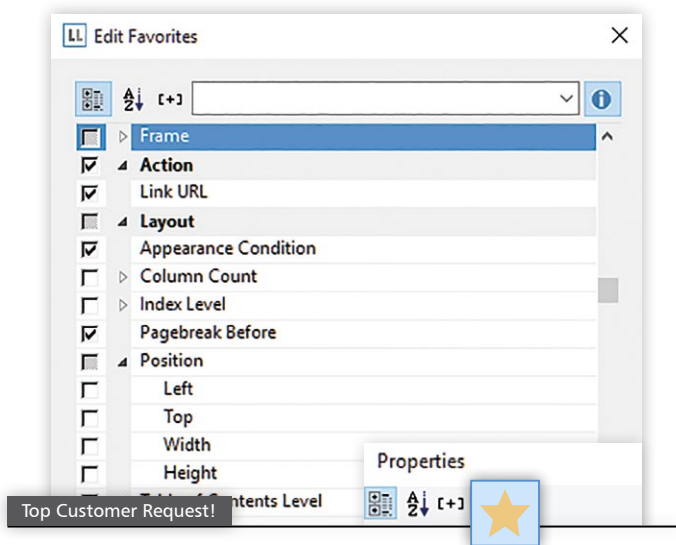
Logging Interface

The new logging interface lets you integrate logging output with the logging function of your application for effective analysis. Alternatively, you can use existing logging frameworks, such as log4net or NLog (.NET sample code is provided). This enables you to process all logging output in one place.

Designer

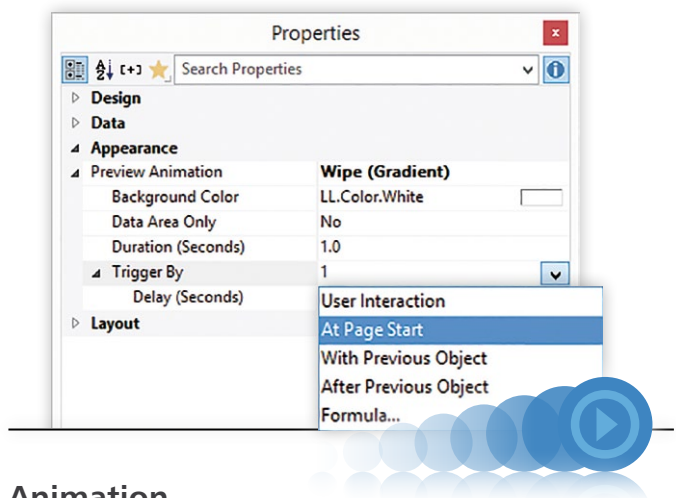
It is now possible to mark individual properties as favorites. As a result, only the most important and frequently used properties are displayed in the properties window, resulting in an uncluttered user interface. At the same time, all hidden properties are just one click away.

Tables and sub-tables benefit from the Keep Group/Data Together feature, which prevents unwanted page breaks. Users can enhance presentations with animation options in the preview window. Support for further barcodes means LL is and remains the reporting tool with the greatest choice of barcodes.



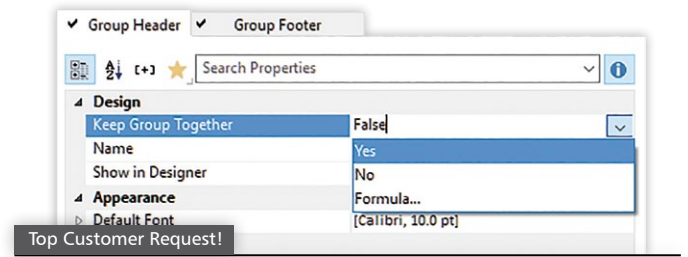
Property Favorites

The List & Label Designer offers a great variety of settings. But if you prefer to keep it simple for the user, you can – with Property Favorites.



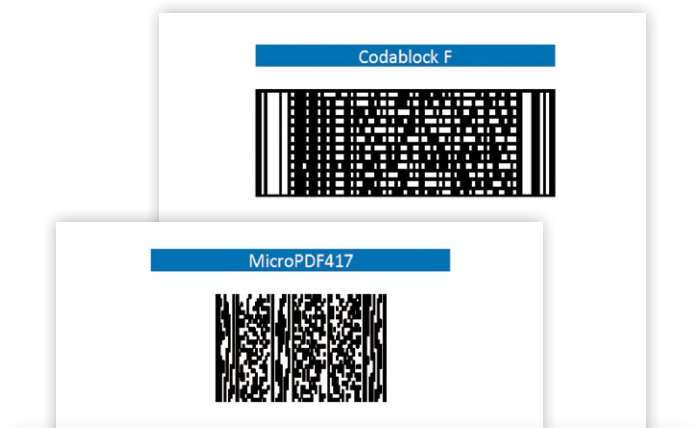
Animation

Instead of using PowerPoint or similar software, you can now animate report objects in the preview window. This gives your presentations greater impact and keeps your audience engaged.



Keep Group/Data Together

The most frequently requested feature is the suppression of unwanted page breaks in tables, separating data that belongs together. This can be selected in the Designer with a single click. It is available for .NET and C++ when using a data provider.



Barcodes

MicroPDF417 and Codablock F barcode types have been added to LL22. The new release also supports all GS1 application identifiers. A new Designer feature enables checksums to be calculated using any weighting.

Other Additions

More New Features for Tables

- ✓ Until now, you predefined the sorting to be applied. But now you can optionally select the sort order dynamically based on a formula.
- ✓ The current page counter and the total page counter for group headers and sub-tables in the report container can now be reset after a page break. This means a separate page counter can be used for each group.

INTERNETMARKE®

**Internetmarke
by Deutsche Post**

In .NET applications, you can save time by incorporating an Internetmarke (online stamp) from Deutsche Post in the LL Designer. Mail is then automatically franked when it is printed. You need a corresponding agreement with Deutsche Post to use this service.

Enhanced Crosstabs

LL22 introduces a number of new features for crosstabs. Multiple result cells allow you to view several dimensions of your data simultaneously – for instance, units plus revenues per quarter and customer. Cross-references make it easy to perform calculations and display data and results at a convenient place in the table. Automatic Fill-Up creates empty cells where no data is available. This helps users to compare time periods.

Expandable regions also reduce clutter. In the preview window, users expand the time period they wish to examine. Top-N reports now include the option of displaying a total for all “other” data after the Top-N data.

Cross References

Contents of other cells can be displayed and various calculations performed, for example percentages and differences. This saves users time and effort, as this wasn't possible before.

Expandable Regions

Users can analyze data much more quickly and easily if they expand only the periods they are interested in.



	2015					2016					2017	Total		
	Q - 1	Q - 2	Q - 3	Q - 4	Total	Q - 1	Q - 2	Q - 3	Q - 4	Total	Total	Units	Revenue	Fraction
Beverages	...	270	...	535	805	328	483	530	428	1769	2152	4726	114889,05	17,09%
Condiments	...	220	...	282	502	282	428	246	379	1335	951	2788	60629,15	9,02%
Confections	...	183	...	316	499	676	352	268	427	1723	1556	3778	83093,37	12,36%
Dairy Products	...	179	...	433	612	660	565	580	553	2328	1765	4705	133606,10	19,88%
Grains/Cereals	...	9	...	199	208	334	403	181	342	1260	860	2328	52582,00	7,82%
Meat/Poultry	...	111	...	162	273	428	123	182	181	914	758	1945	90351,81	13,44%
Produce	...	92	...	120	212	99	267	193	172	731	666	1609	59651,30	8,87%
Seafood	...	171	...	364	535	422	428	465	484	1799	1709	4043	77373,00	11,51%
Total	...	1235	...	2411	3646	3229	3019	2645	2966	11859	10417	25922	672175,78	100,0%

Automatic Fill-Up

This feature makes it easier to compare periods when data is missing.

Top-N and “Others”

You can optionally show a total for other data after the Top-N data. This puts the Top-N figures more clearly in context.

		Total		
		Units	Revenue	Fraction
Federal Shipping	Beverages	214	5399,60	21,0%
	Condiments	93	4738,20	18,4%
	Meat/Poultry	212	4294,50	16,7%
	Others	605	11306,50	43,9%
Total		1124	25738,80	100,0%
Total		1124	25738,80	100,0%

Multiple Result Cells

LL22 supports multiple result cells to display various totals side by side.



100% recycled,
printed with
eco-friendly ink.



Your Version 22!

Subscribers

With an active Professional or Enterprise Edition you already have LL22 included – and you are all set. You'll receive information on the download. If you have already registered your previous version, your update will already be registered and ready to collect. Otherwise, please register the previous version.

New Customers

Start now with version 21 and get version 22 without additional costs, either as a subscription update with the Professional or Enterprise Edition or as a free Standard update. Please register your license by Oct. 27, 2016 and you'll receive information on the download.

Early Bird Offer for Customers With Older Licenses

You can save 20% up to Oct. 25, 2016

- ▶ on the regular price for the Standard Edition 22.
- ▶ on the regular first year's price for an upgrade to a Professional or Enterprise Edition.



Release expected Oct./Nov. 2016

Early bird offer only valid until Oct. 25, 2016

Place your order now!

 www.combit.com/shop @ service@combit.com

 +49 (0) 7531 90 60 10 or

+1 800 256 3608 (toll-free in the US)

© **combit GmbH 2016**, subject to changes and possible errors! This content is only a description and does not represent a guarantee for the quality of the product. Please note that with the third-party product versions that are mentioned, different releases may occur that include other functions. We therefore recommend trying out our free of charge test version in order to avoid any possible problems in advance. All named products and product descriptions as well as logos are brands, registered trademarks or the property of their respective owners.

combit GmbH
Untere Laube 30
78462 Constance
Germany

Sales & Service Team
T +49 (0) 7531 90 60 10
F +49 (0) 7531 90 60 18
service@combit.com

combit.com